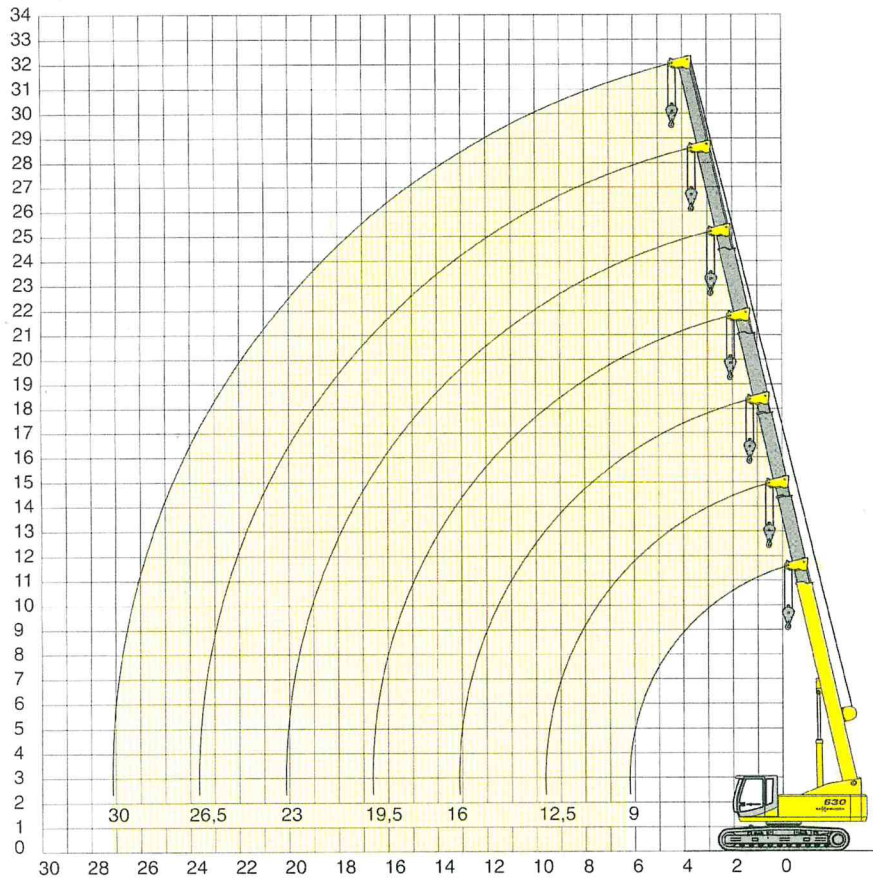


## Kranausrüstung (Teleskopausleger 30 m) Crane Equipment (Telescopic boom 30 m)

# 630 R-HD



### Notes:

1. The rated loads shown are based on the machine on firm level ground without travelling.
2. The rated loads shown are in metric tons valid for 360 degrees swing.
3. The rated loads are according to DIN 15019.2, tipping angle 5° and do not exceed 75 % of tipping load.
4. The rated loads shown include the weight of all lifting attachments, such as hook, etc.
5. The rated loads are valid for max. extended undercarriage, the loads are valid for retracted undercarriage.
6. The users must derate or limit the lifted loads to allow for adverse conditions such as soft or uneven ground, out of level conditions, wind, side loads, pendulum action, jerking or sudden stopping of loads, inexperience of personnel and travelling with a load.
7. Max. single line pull for crane operation with rope diameter 14 mm 3000 kg

## Traglasten - Load Chart

Ausladung Radius m	Auslegerlänge / boom length m													
	9,0		12,5		16,0		19,5		23,0		26,5		30,0	
1,0	35,0	35,0	20,0	20,0	15,0	15,0	14,0	14,0						
2,0	35,0	35,0	20,0	20,0	15,0	15,0	14,0	14,0	11,0	11,0	8,9	8,9		
3,0	31,7	22,9	20,0	20,0	15,0	15,0	14,0	14,0	11,0	11,0	8,9	8,9	5,0	5,0
4,0	27,1	13,9	20,0	13,7	15,0	13,6	14,0	14,0	11,0	11,0	8,9	8,9	5,0	5,0
5,0	18,0	9,7	17,7	9,5	15,0	9,4	13,3	9,9	11,0	10,2	8,6	8,6	5,0	5,0
6,0	13,0	7,2	12,8	7,0	12,7	6,9	12,0	7,3	10,3	7,6	8,3	7,9	5,0	5,0
7,0	(6,2m) 11,9	(6,2m) 6,8	9,8	5,3	9,7	5,3	10,1	5,7	9,5	6,0	7,8	6,2	5,0	5,0
8,0			7,8	4,2	7,7	4,1	8,1	4,5	8,4	4,8	7,4	5,0	5,0	5,0
9,0			6,3	3,3	6,2	3,2	6,6	3,6	6,9	3,9	6,9	4,1	5,0	5,0
10,0			(9,6m) 5,6	(9,6m) 2,8	5,1	2,5	5,5	2,9	5,8	3,2	6,0	3,3	5,0	3,5
11,0					4,2	2,0	4,6	2,3	4,9	2,6	5,1	2,8	5,0	2,9
12,0					3,5	1,5	3,9	1,9	4,2	2,1	4,4	2,3	4,5	2,5
13,0					(13m) 2,9	(13m) 1,2	3,3	1,5	3,6	1,8	3,8	1,9	3,9	2,1
14,0							2,9	1,2	3,1	1,4	3,3	1,6	3,4	1,7
15,0							2,4	0,9	2,7	1,2	2,9	1,3	3,0	1,5
16,0							2,1	0,7	2,3	0,9	2,5	1,1	2,6	1,2
17,0							(16,6m) 1,9	(16,6m) 0,6	2,0	0,7	2,2	0,9	2,3	1,0
18,0									1,7	0,5	1,9	0,7	2,0	0,8
19,0									1,5		1,7	0,5	1,8	0,7
20,0									1,3		1,5		1,6	0,5
21,0									(20,1m) 1,3		1,3		1,4	
22,0											1,1		1,2	
23,0											(23,6m) 0,9		1,1	
24,0													0,9	
25,0													0,8	
26,0													0,7	
27,0	TAB-NR.: 630R-HD-75/1950(1200)4.0/09.99													(27,1m) 0,5