

CCH50T

General-Purpose Compact Telescopic Crane

Lifting capacity (JIS) **4.8** metric tons

*Versatile lifting in confined areas
Full 360 degree turning on
4 meter roads*

*Lifts and carries up to 2 tons
Rubber crawlers—excellent on
rough or soft terrain and*

*damage-free on paved surfaces
Comfortable and safe operation*

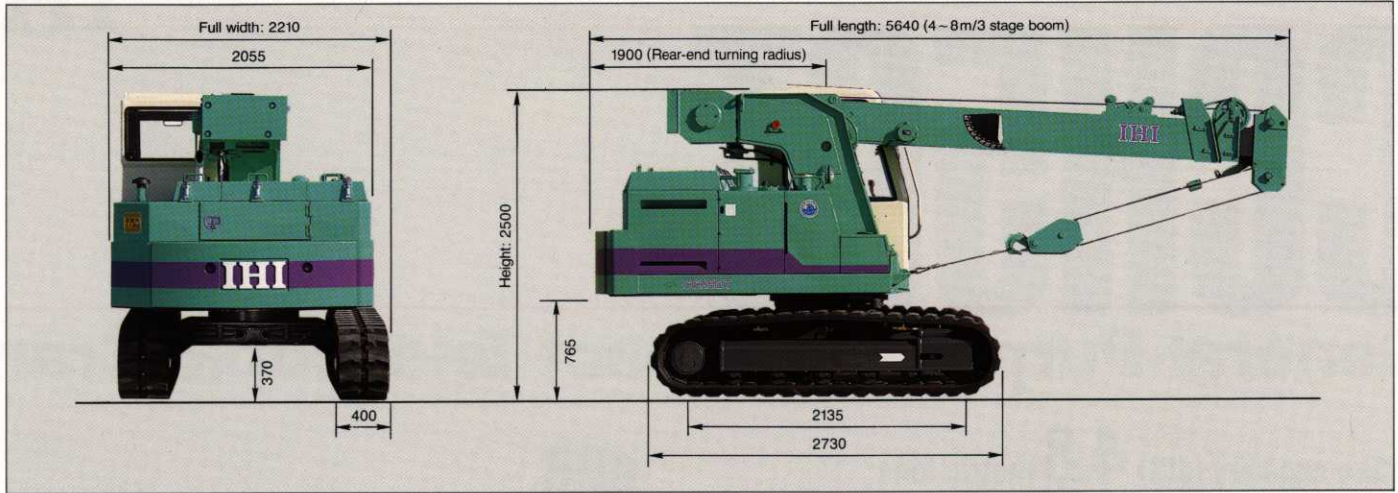
Designed for environmental acceptability



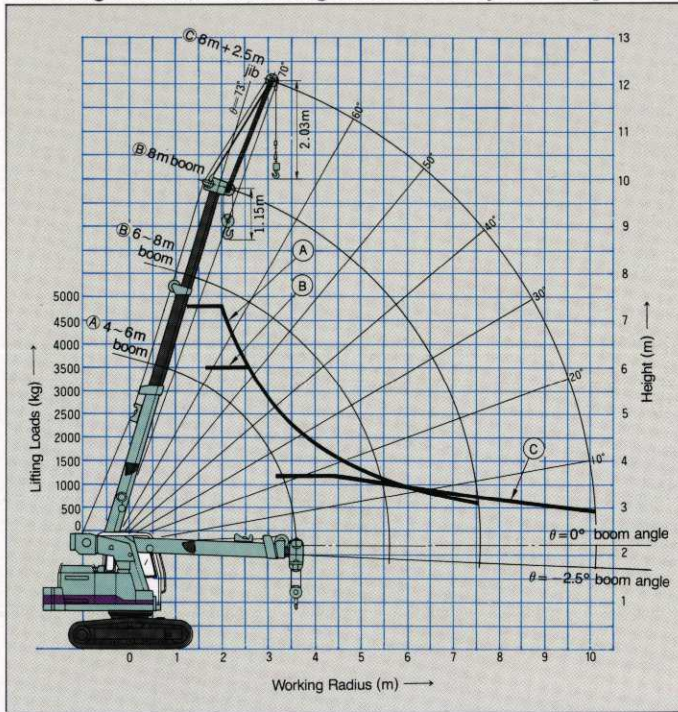
■ Specifications

Performance	
Max. lifting load × working radius	4.8 ton × 2.0m
Max. total lifting height (4 part lines)	12.2m (wire rope length of 80m) 22.2m (wire rope length of 120m)
Load hoisting/lowering rope speed	56m/min (3rd layer on drum)
Boom hoist speed	14.5 sec./ -2.5° ~ 73°
Boom extension speed	11.5 sec./4m ~ 8m
Swing speed	2.6 rpm
Gradeability	40% (22°)
Travel speed	2.7km/hr
Total weight (with 4 ~ 8m boom)	7970kg
Average ground bearing pressure	approx. 0.47kg/cm ²
Engine	
Model	ISUZU 4BDI diesel engine
Rated output	77 PS/2200 rpm
Max. torque	25.0kg·m/1400 rpm
Fuel tank capacity	110ℓ

■ General Dimensions (Unit: mm)



■ Working Radius (4 ~ 8 m/3 stage boom + 2.5 m jib) . Lifting Loads



■ Rated Lifting Loads (4 m ~ 8 m main boom)

Working radius (m)	Main boom: 4 m ~ 6 m under		Main boom: 6 m over ~ 8 m	
	Fixed Operation, 360° A (kg)	Carrying Operation, 360° (kg)	Fixed Operation, 360° (kg)	Carrying Operation, 360° (kg)
2.0	4800	2000	3500	2000
2.2	4300	2000	3500	2000
2.5	3700	2000	3500	2000
2.6	3500	2000	3500	2000
3.0	2870	1640	2870	1640
3.5	2310	1320	2310	1320
4.0	1890	1080	1890	1080
4.5	1580	900	1580	900
5.0	1350	770	1350	770
5.5	1150	650	1150	650
6.0			960	540
6.5			800	450
7.0			690	390
7.5			580	330

■ Rated Lifting Loads (2.5 m jib option)

Main boom angle	73°	70°	60°	50°	40°	30°	20°	10°
All direction/360° (kg)	1200	1200	1060	830	660	500	410	380